



**OLMSTED COUNTY  
SHERIFF**

**WELCOME**

# AGENDA

- Byron COPS Deputy
- Byron School Resource Deputy
- Drug Trends
- Online Safety
- Safe Harbor
- Olmsted Community Outreach
- Family Impact Speaker
- Panel/Q&A

ONLINE RESOURCES







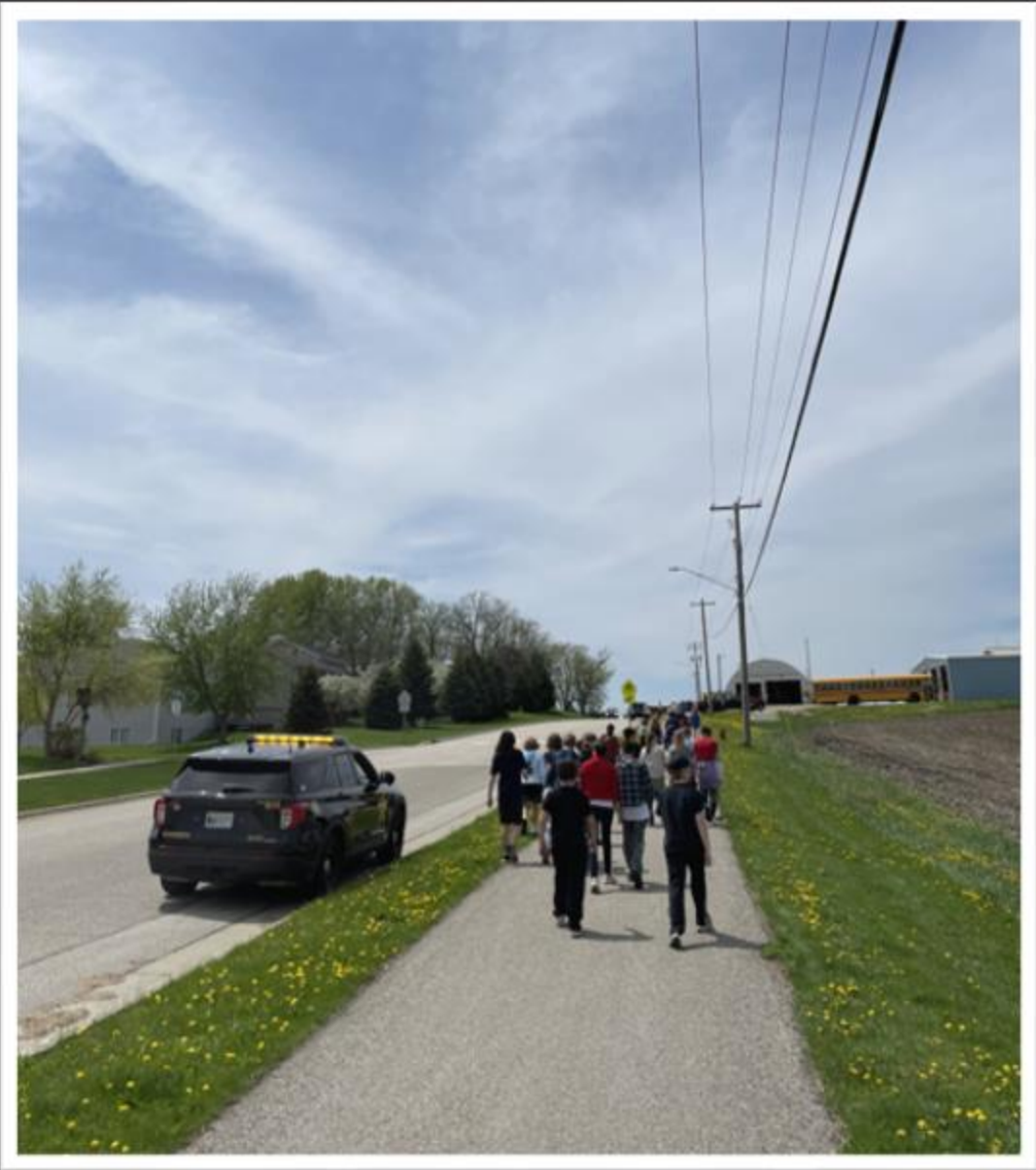
# Community Oriented Policing

Deputy Chris Streed

# Bridging the Gap

- Liaison for the City of Byron.
- Working with the community to solve issues and create engagement between OCSO and the Byron area.
- Handle traffic complaints, parking concerns and general ordinance violations.







# Good Neighbor Days

July 17<sup>th</sup> – 21<sup>st</sup> 2024





# Night to Unite

Register your party!

August 6<sup>th</sup>, 2024





# 2023 Byron Calls for Service

911	19	19
Accident	36	36
Accident Blocking	3	3
Accident Injury	5	5
Adult Protection	7	7
Alarm	75	75
Animal	50	50
Animal Bite	3	3
Apprehension Order	3	3
Arson	1	1
Assault	1	1
Assist	251	251
Assist Fire Department	10	10
Assist Law Enforcement	2	2
Bike Stop	2	2
Burglary	4	4
Child Neglect	3	3
Child Protection	19	19
Community Service	537	537
Criminal Sexual Conduct	4	4
Damage to Property	7	7
Deceased Person	10	10
Disorderly Conduct	20	20
Dispute	39	39
Domestic	19	19
Drugs - Paraphernalia	10	10
DWI or CVO	13	13
Escort	9	9
Forgery	2	2
Graffiti	1	1
Grass - Brush Fire	1	1
Harassment	23	23

Homeless Encampment	1	1
Intoxicated Person	4	4
Juvenile Status Offense	1	1
K9 Demo	6	6
K9 Training	7	7
Lift Assist	4	4
Lost - Found Property	11	11
Medical	177	177
Missing Person	5	5
Motor Vehicle Recovery	1	1

New	3	3
Noise	19	19
OFP HRO DANCO Violation	5	5
Ordinance Violation	19	19
Paper Service	105	105
Parking Enforcement	2	2
Parking Violation	39	39
Person In Crisis	39	39
POR Address Verification	7	7
Probation Check	2	2
Project Lifesaver	54	54
School Bus Arm Violation	13	13
Structure Fire	7	7
Suspicious Circumstance	124	124
Theft	35	35
Traffic Assist Complaint	100	100
Traffic Enforcement	162	162
Traffic Stop	1058	1058
Trash Outdoor Fire	1	1
Trespass	4	4
Unknown	4	4
Vehicle Fire Exposure	2	2
Vehicle Fire No Exposure	1	1
Warrant	27	27
Weapons Violation	1	1
<b>Grand Total</b>	<b>3239</b>	<b>3239</b>

- Average of nine LE calls a day.
- Proactivity is the goal.
- Approximately 62% of calls were Deputy initiated.



# Code Red

Emergency Alerts System for  
Olmsted County

- Byron Snow Emergencies

- Informs the community of  
other emergency situations in  
Byron





# Byron School Resource Deputy

Deputy Nate Jacobson





## DAY TO DAY

- Morning traffic
- Check in with schools
- Quarterly safety meetings
- Classes I am not a distraction
- No office
- Relationship building
  - Success with my SRD style
- Afternoon traffic

# YOUTH AND DRUGS IN SE MINNESOTA

- High Schools
- Middle Schools
- Alternative Learning Centers
- Youth (13-18yrs)





# SUBSTANCES ENCOUNTERED IN SCHOOLS

## COMMON

- Marijuana
- Prescription pills
- E-Cigs (Vaping) and tobacco

## RARE

- Alcohol (higher frequency outside of school)
- Meth
- LSD (Acid)
- Over the counter meds (cough syrup)



# WHY DO OUR YOUTH USE DRUGS?

- Social Pressure
  - Peers
  - Stress Management
- Public Perception
  - Social Media
  - Celebrities/Athletes/Actors/Actresses
  - Music Artists
- Easy of Access
  - Profitable
- Legality in Minnesota
  - “Not as harmful as other drugs”





# MARIJUANA

# MARIJUANA SIGNS AND SYMPTOMS

Marijuana is the most commonly used drug. It has restricted legal use in some states and countries, and it can be used for recreational or medical treatment. Most of its effects include:

- Altered senses and perceptions, especially to time.
- Mood changes.
- Changes in coordination and movement, which are often slowed.
- Altered thought processes, problem-solving abilities, and marked short term memory impairment.
- Dizziness, lightheadedness, or a loss of coordination.
- Lack of inhibition, which may make the student suddenly more social with others, impulsive behaviors, or possible inappropriate behaviors.
- An obvious sense of relaxation and calmness that may not be typical.
- Coughing from throat and lung irritation.
- Changes in appetite, which can be a decrease, but most often is a marked increase referred to as the “munchies”



# VAPES

- Common Brands
  - Swift
  - Loon
  - Maxx
  - Elfbar





# WHAT IS VAPING?

- Vaping is the act of inhaling and exhaling the aerosol, often referred to as vapor, which is produced by an e-cigarette or similar device.
- The term is used because e-cigarettes do not produce tobacco smoke, but rather an aerosol, often mistaken for water vapor, that actually consists of fine particles.
- Many of these particles contain varying amounts of toxic chemicals, which have been linked to cancer, as well as respiratory and heart disease.

# WHAT WE KNOW ABOUT VAPING?

## Vaping Is Still Bad for Your Health

Made up of nicotine, glycerol and **propylene glycol**, **benzoic acid**, and flavorants — and is inserted into the end of the e-cigarette device.

## Electronic Cigarettes Are Just as Addictive as Traditional Ones.

Nicotine is the primary agent in both regular cigarettes and e-cigarettes, and it is highly addictive.

## A New Generation Is Getting Hooked on Nicotine.

In 2015, the U.S. surgeon general reported that e-cigarette use among high school students had increased by 900 percent, and 40 percent of young e-cigarette users had never smoked regular tobacco.

**In Minnesota, Vaping/E-Cigarette use/possession is ILLEGAL for persons under 21 years old.**





# MORE ON VAPING

- Since they leave little odor, e-cigarettes are particularly easy to hide and even use discreetly in public places, including school.
- Utilize rechargeable batteries or plug in.
- Many products are imported which are unregulated or screened by the FDA.
- Refillable reservoirs with flavored products.
  - Strawberry, apple, cotton candy, etc.



# JUUL/VAPES PRODUCTS



JUUL, which is a small, sleek device that resembles a computer USB flash drive. Its subtle design makes it easy to hide, which helps explain why it has become so popular among middle and high school students.

Accounts for about 72 percent of the market share of vaping products in the United States.

# XANAX

**SLANG:** Bars, Bicycle Handle Bars, Black Out Boys, Benzos, Footballs, Hulk, Ladders, Planks, School Bus, Sticks, Xanies, Zanbars, Zannies, Z-Bars.





# INFORMATION ON XANAX

The effects of depressants such as Xanax are largely the same regardless of the drug taken:

- Sleepiness or lethargy that may be mistaken as laziness or tiredness.
- Slurred or nonsensical speech.
- Slowed or labored breathing and a slowed pulse rate.
- Lack of coordination or muscle control, which can lead to a difficulty walking or moving normally and muscle weakness.
- Dizziness, lightheadedness, confusion, dulled senses, and a reduced reaction time.

# CLOTHING



# CONCEALMENT AND PRODUCTS

Products/clothing may have false bottoms, sewn in pockets, etc.





# SECRET COMPARTMENTS



**BACK PANEL**



**SHOULDER STRAP**



**INTERIOR POCKET**



# PERSONAL HYGIENE

Designed to imitate real products in order to conceal/hide controlled substances or other items.





# PERSONAL HYGIENE



# Universal Symptoms of Drug Abuse

## Eyes/Nose/Mouth

Bloodshot eyes or noticeable changes in pupil size (e.g., small like a pinpoint or overly large). Nosebleeds or nasal irritation from snorting, coughing, or an increased thirst due to dry mouth/throat. An irritation of the mouth or throat from smoking,

## Sudden Weight Changes

Including both loss and gain due to a byproduct of drug induced appetite changes.

## Withdrawal Symptoms

Complaints of a headache, runny nose, profuse sweating, nausea, vomiting, or excessive fatigue and sleeplessness may be the result of substance use or withdrawal.[46]



## Uncharacteristic Poor Hygiene

Such as wearing dirty clothes, a strong body odor from not bathing, noticeable poor oral hygiene or health, and a general unkempt appearance [45]

## Skin

Unexplained bruising or marks on skin, or wearing inappropriate clothing like long sleeves in warm weather to cover injection marks. Flushed skin or heavy breathing which may be a result of increased heart rate and blood pressure [44]

## Other Behaviors

The student may exhibit body shaking, trembling, tic-like movements not previously noticed, or noticeable evidence of picking at the skin on the face or arms.



# TIPS FOR PARENTS

- **Use Your Nose.** Have a real, face-to-face conversation when your son or daughter comes home after socializing with friends.
- **Look Them in the Eyes.** When your child gets home after going out with her friends, take a close look. Pay attention to his or her eyes. Eyes will be red and heavy-lidded, with constricted pupils if they've used marijuana. Eye lids maybe droopy with alcohol use.
- **Watch for Mood Changes.** How your child socially interacts with you is very telling. Has behavior changed?
- **Change in Interests.** Lifestyle changes (music, sports, friends, academics, etc)
- **Monitor their driving and the car.** Does the vehicle show signs of drug use? Has their driving behavior changed?

Have the conversation. Ask questions. Stay involved.



# WHAT HAPPENS WHEN YOUR KID GETS CAUGHT?

- Law Enforcement notified
- Parents notified
- Student is ticketed and/or arrested (ADC or JDC)
- Court
  - Probation
  - Diversion Program
  - Community Service
  - Monetary Fine
  - Conviction Record







**OLMSTED COUNTY  
SHERIFF**

# **DRUG TRENDS**

Investigator Jeff Salley

# COMMUNITY ISSUES

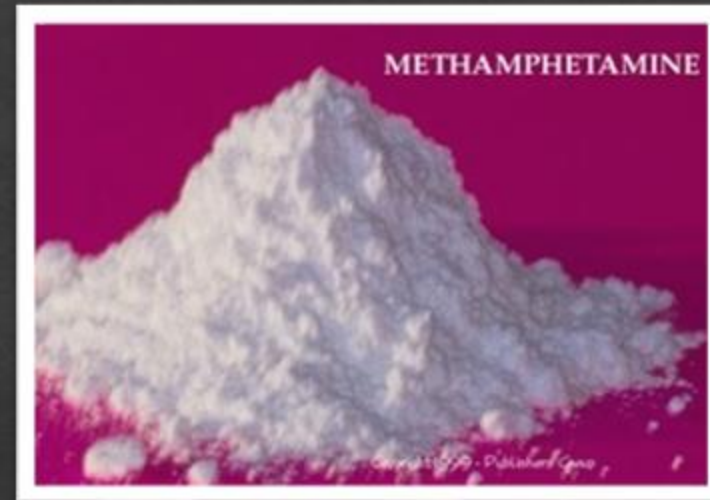
**Teenage Alcohol and Chemical Use:** Numbers have been staying consistent over the years for underage drinking/driving, however we are seeing an increase in cases involving marijuana and prescription medications.



# TYPES OF DRUGS SOLD/USED

- Methamphetamine
- Marijuana
- Marijuana Wax, Oils, and Edibles
- Heroin
- Fentanyl
- Prescription Drugs
- Cocaine / Crack cocaine
- Ecstasy (Club Drugs)
- LSD, Acid
- Psilocybin Mushrooms

# METHAMPHETAMINE





# SEIZED IN OLMSTED COUNTY



In 2022 Olmsted County Seized approximately 201 pounds of Methamphetamine.

# HEROIN





# RIZZY – HEROIN CUTTING AGENT





# FENTANYL

Fentanyl is a synthetic opioid that is up to 100 times stronger than Morphine and up to 50 times stronger than Heroin.

In 2022 Olmsted County seized approximately 75 pounds of Fentanyl



# COUNTERFEIT OXYCODONE:



Olmsted County Seized approximately 40,000 pills in 2022.

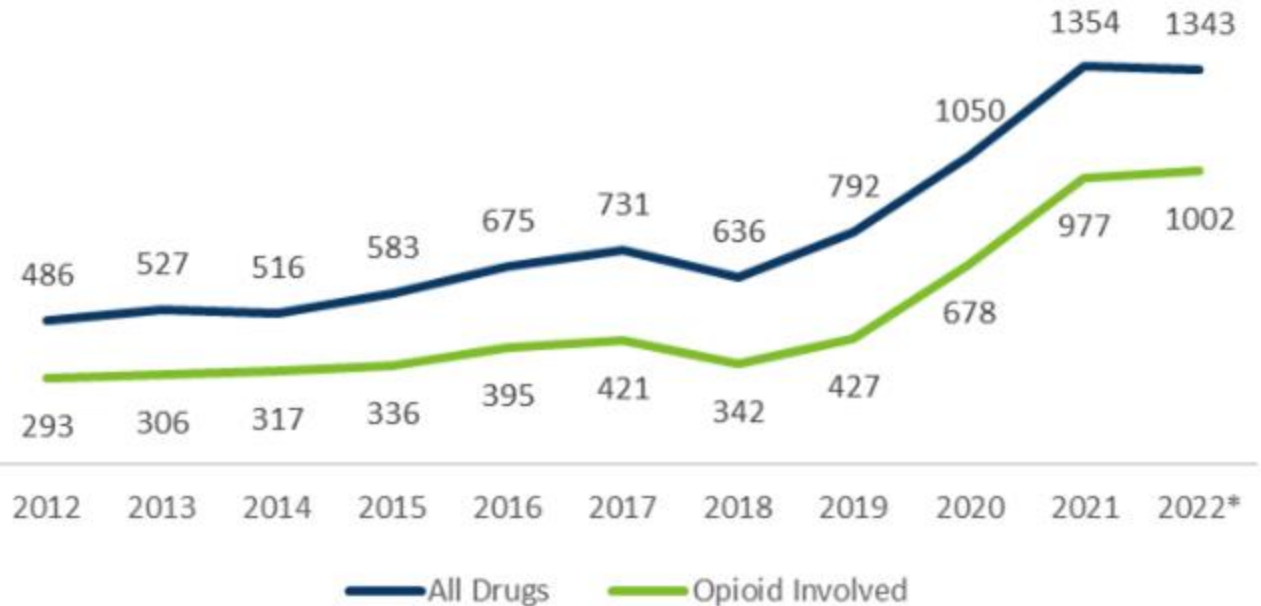
Lab results show 6 out of 10 pills contain a lethal dose of Fentanyl.



# MINNESOTA OPIOID EPIDEMIC

Fentanyl is now involved in 92% of all opioid-involved deaths and 62% of all overdose deaths in Minnesota, according to preliminary 2022 data. Opioid-involved deaths increased 3% (977 to 1002 deaths) from 2021 to 2022, according to preliminary data.

Opioid-involved overdose counts mirror all drug overdose numbers among MN residents



Source: MDH Death Certificates 2012-2022. \*2022 data are preliminary at time of release





NDC 69547-353-02

0.1 mL into nasal spray per dose  
For use in the nose only

**Rx Only**




**NARCAN**<sup>®</sup> (naloxone HCl)  
**NASAL SPRAY 4 mg**

**DO NOT TEST DEVICES OR OPEN BOX BEFORE USE.**

**Use for known or suspected opioid overdose in adults and children.**

This box contains **two (2)** 4-mg doses of nalox

 **NARCAN**<sup>®</sup> **NASAL SPRAY**

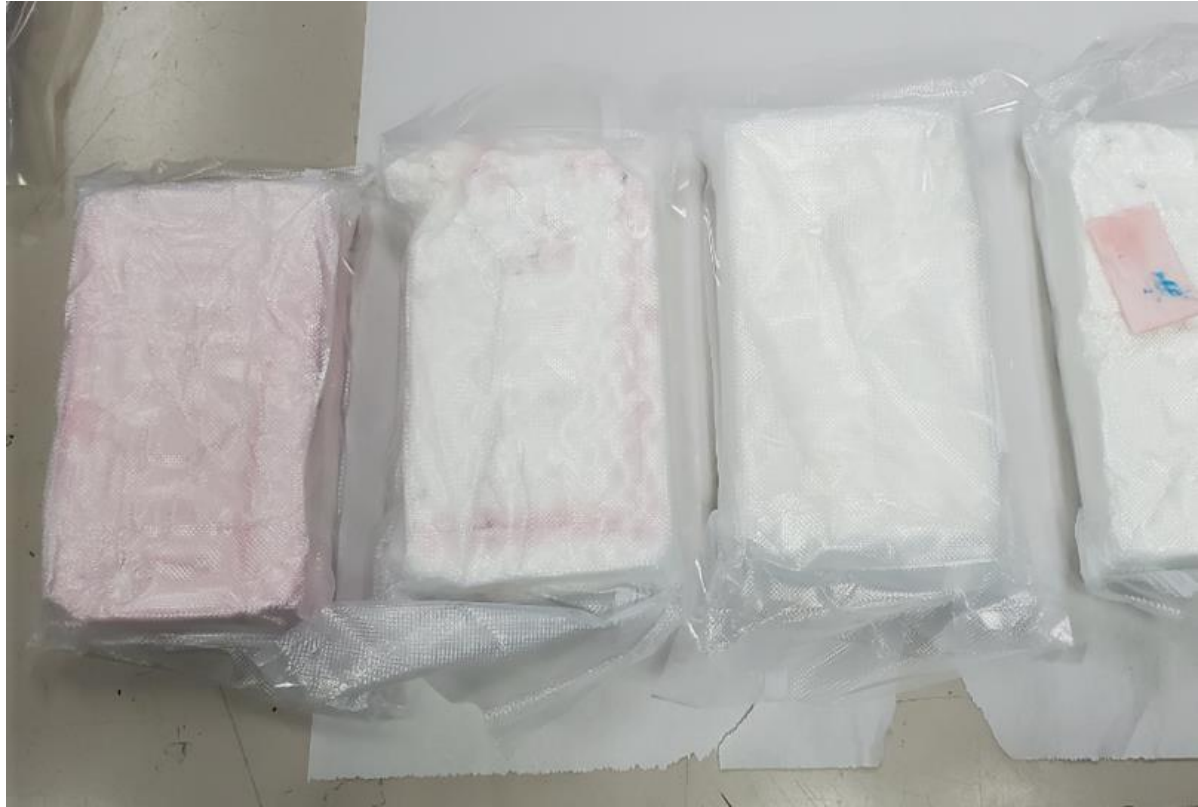
**OVERDOSE SAVIOR**

Carried and used by  
OCSO Deputies/  
Ambulance/EMT

Opiate blocker

# COCAINE

- In the last three years we have seen a large increase in Cocaine locally
- In 2022 Olmsted County Seized approximately 95 pounds of powder cocaine.





# MARIJUANA (FLOWER), OIL, EDIBLES , VAPES



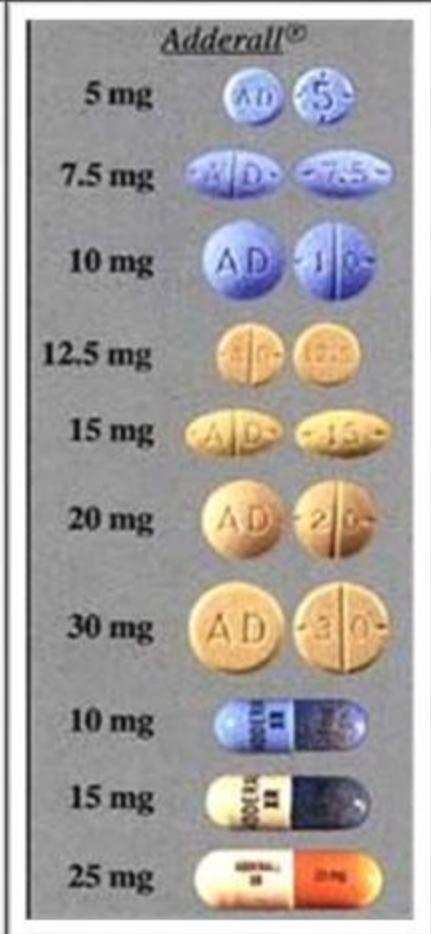
# 130 GRAMS WAX

- \$50 to \$60 a Gram
- Value of \$5000 to \$5800
- THC Content as high as 90% or greater
- Effects include problems w memory, learning, difficulty in thinking, loss of coordination
- It only takes a “DAB”





# PRESCRIPTION DRUGS









# SAFEGUARD MEDICINE IN YOUR HOME

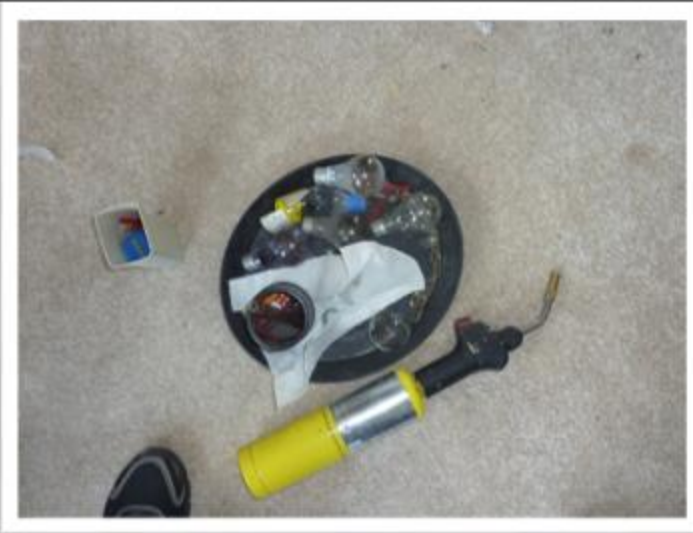
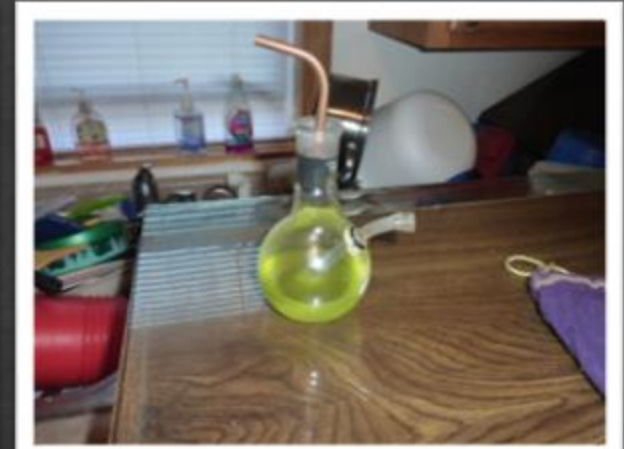
# DISPOSE OF EXPIRED/UNUSED PRESCRIPTIONS

- The Olmsted County Sheriff's Office has a permanent Prescription Drug Collection Box in the vestibule of the Adult Detention Center at the Government Center.
- The drop box is accessible 24 hours a day, 365 days a year.





# TYPICAL DRUG PARAPHERNALIA



WITH THE  
DRUGS  
COMES  
THE  
MONEY






# PRICING FOR DRUGS IN THIS AREA

<b>Marijuana</b>	<b>Ounce/ 28 grams</b>	<b>\$ 200.00 to 250.00</b>
Wax	1 gram	\$50.00 to \$60.00
Vape Cartridges	1 Cartridge	\$40.00 to \$70.00
Cocaine	1 gram powder	\$100.00 to \$115.00
Crack-Cocaine	1 gram rock	\$150.00 to \$175.00
Methamphetamine	1 gram – crystal	\$60.00 to \$75.00
Fentanyl	1 gram	\$80.00 to \$150.00
Heroin	1 gram	\$120.00 to \$150.00
Fentanyl Pills (Counterfeit)	30 mg pill	\$5-\$80 per pill

# Laxed Controlled Substance Laws







# **OLMSTED COUNTY DRUG COURT**

Mission is to integrate drug treatment services with the criminal justice system to provide an alternative to incarceration for non-violent criminal drug offenders.

OLMSTED COUNTY  
**SHERIFF**





SOUTHEAST MINNESOTA  
POLICE - SHERIFF

VIOLENT CRIME ENFORCEMENT TEAM





# INTERNET SAFETY

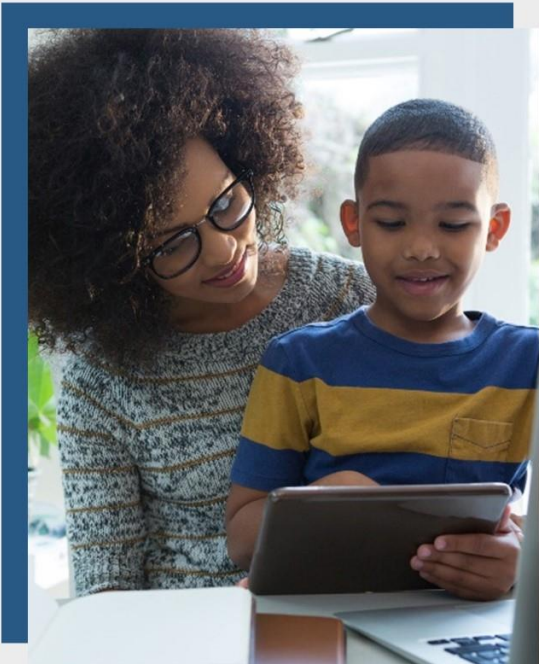
Detective Dan Johnson

**If you're a parent there are only two things to worry about.**

**What your son downloads from the Internet and what your daughter uploads there.**







# INTERNET SAFETY

PARENTS • GUARDIANS • COMMUNITIES

**NetSmartz**



**NetSmartz**



# Online safety program for children and families in grades K-12.

## **Empower**

children to report unsafe behaviors or victimization

## **Engage**

children to take an active role in solving problems safely

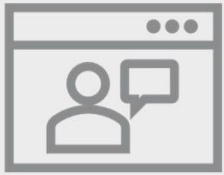
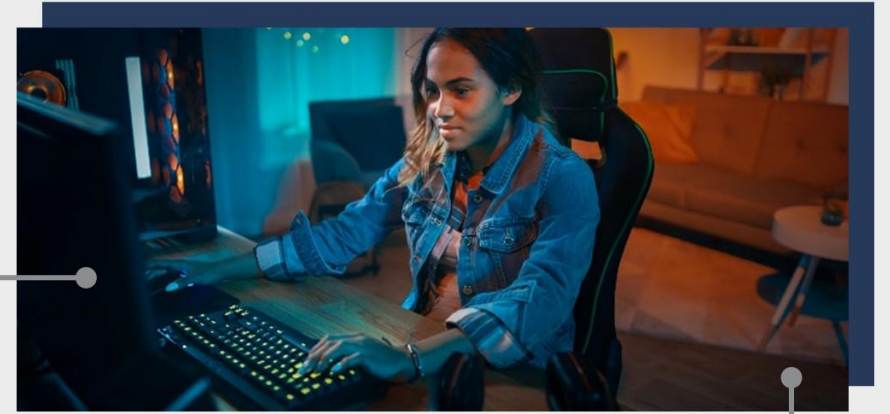
## **Encourage**

children and adults in two-way conversations about safety and risky behaviors





**What do  
your children  
do online?**



# ONLINE





**Technology  
can't catch  
everything, so  
communicate**







**Kids want to hear about these topics from parents and caregivers.**

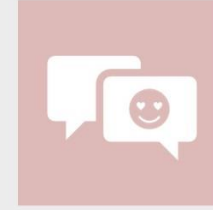
# Online Risk



**Inappropriate  
Content**



**Online  
Privacy**



**Online  
Enticement**



**Sexting**



**Sextortion**



**Cyberbullying**

# Talk about the risks at every age

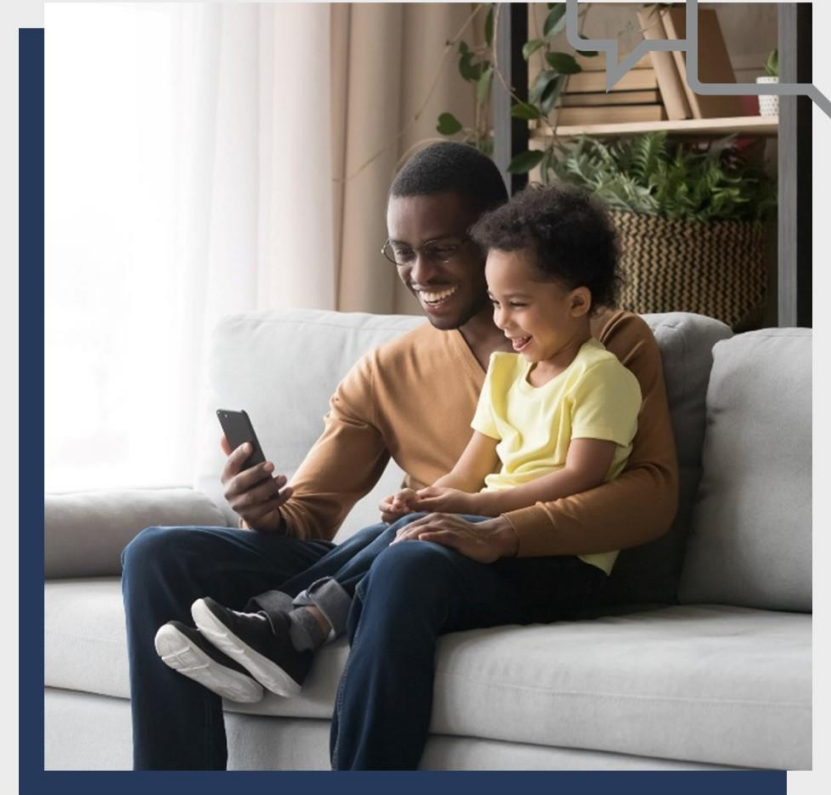
Younger Children	Tweens & Teens
Netiquette	Cyberbullying
Looking at inappropriate content	Sexting
Pop-ups/passwords	Posting personal/inappropriate information
Not trusting everyone you meet online	Meeting offline



# Why start conversations when they are young

1. Build a strong relationship foundation
2. Develop trust between you and your child
3. Be more comfortable talking about uncomfortable topics
4. Help develop your child's critical thinking and problem-solving skills
5. Support your child's development of resiliency

These conversations will help your child stay safe online and offline.





# Inappropriate Content

- Pornography
- Excessive violence
- Hate speech
- Risky or illegal behaviors



# Be a trusted adult



## Listen

without judgment  
or shame



## Help

and take action



## Remain calm

when a child  
reaches out



## Respect

their boundaries



## Help

them identify other  
trusted adults they  
can reach out to



## Be kind

to yourself; it is ok to  
have strong emotions,  
but try to remain calm



# What you can do

- Don't frighten them
- Listen attentively and stay calm
- Tell them it's not their fault
- Answer questions
- Help them report it

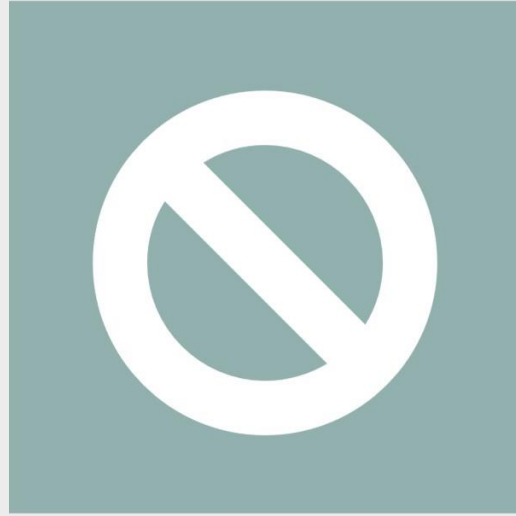
# What they should do

- Turn off the screen
- Use the back button
- Tell a trusted adult
- Report it to the website or app
- Report to [CyberTipline.org](https://www.cybertipline.org)

# Together



**Privacy Settings**



**Blocking**



**Reporting**



# Inappropriate Content

- Inappropriate or illegal behavior
- Offensive language
- Threats of violence
- Underage drinking or drug use
- Hate speech





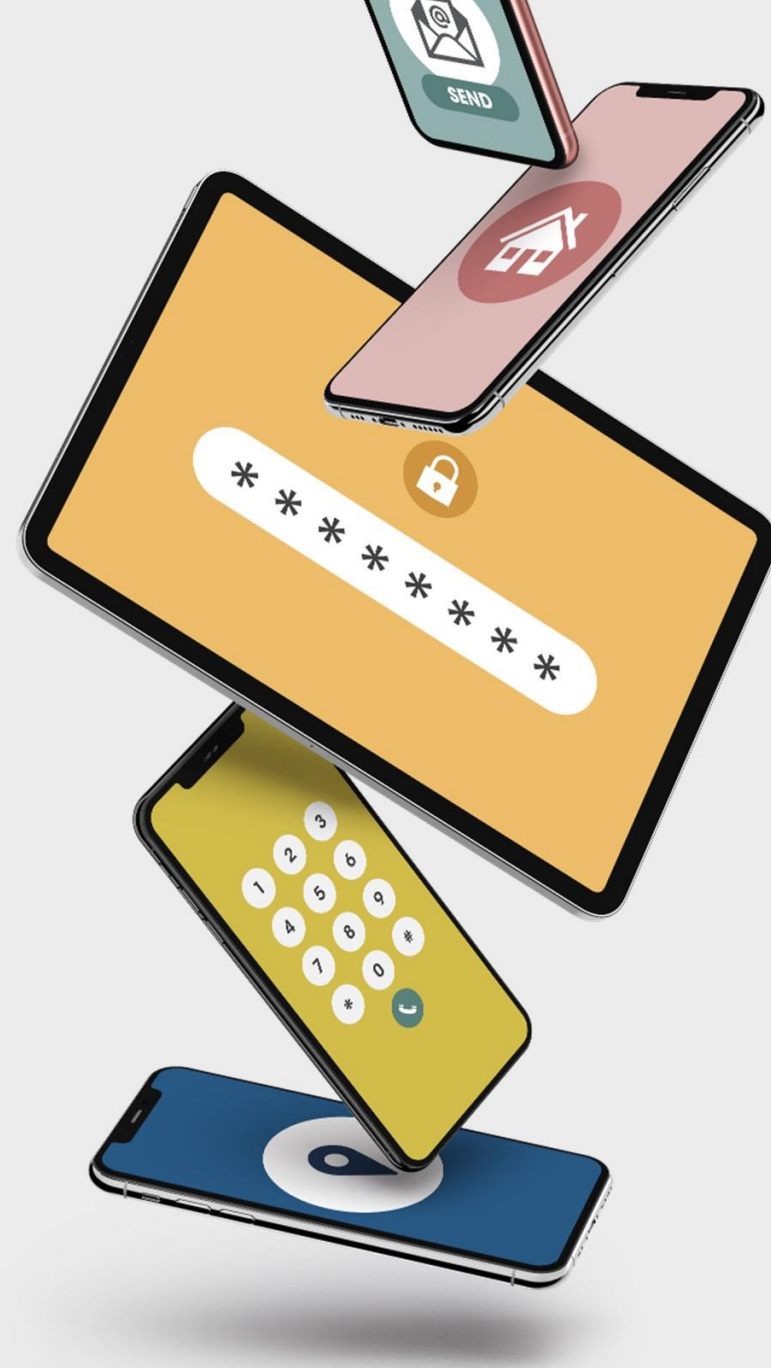
# Online Privacy

What's OK? What's not OK?

- Pictures of family and friends
- Personal information
- Conversations with unknown people in an online game
- Creating videos on streaming services
- 'Checking in' or sharing current location online
- Sending/viewing/sharing explicit or provocative pictures

# Personal information

- Passwords
- Home address
- Location
- Home/Cell phone number
- Email address





  
**Cyberbullying**

  
**Online  
Enticement**

  
**Sextortion**

# **Risks of Sharing Personal Information**

  
**Online Scams**

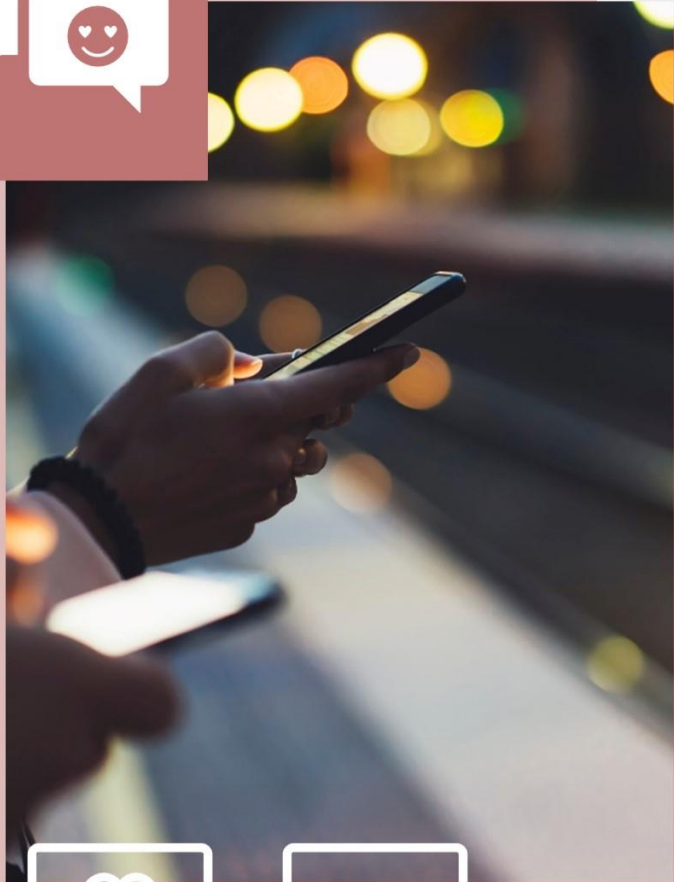
  
**Hacking**

  
**Identity Theft**

  
**Stalking**

# What you can do

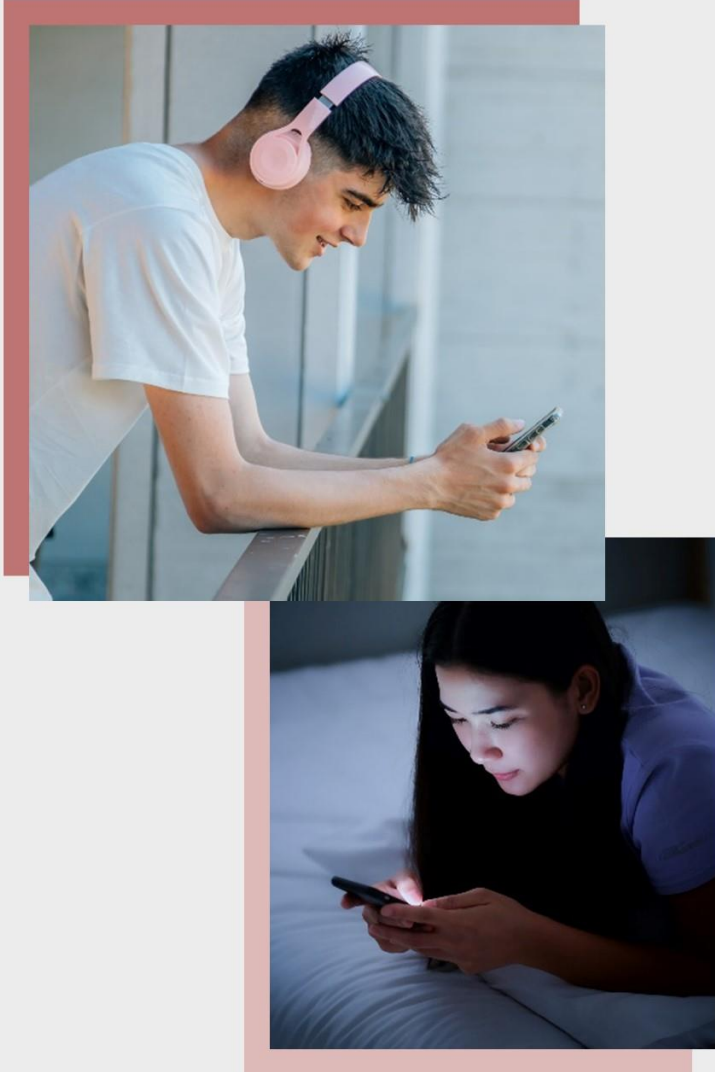
- Establish rules about what they can share
- Learn about reporting options
- Help them set privacy settings
- Help them create strong passwords
- Talk about friends lists
- Create a safety plan



# Online Enticement

**Online enticement** involves an individual communicating with someone believed to be a child via the internet with the intent to commit a sexual offense or abduction and includes [sextortion](#).





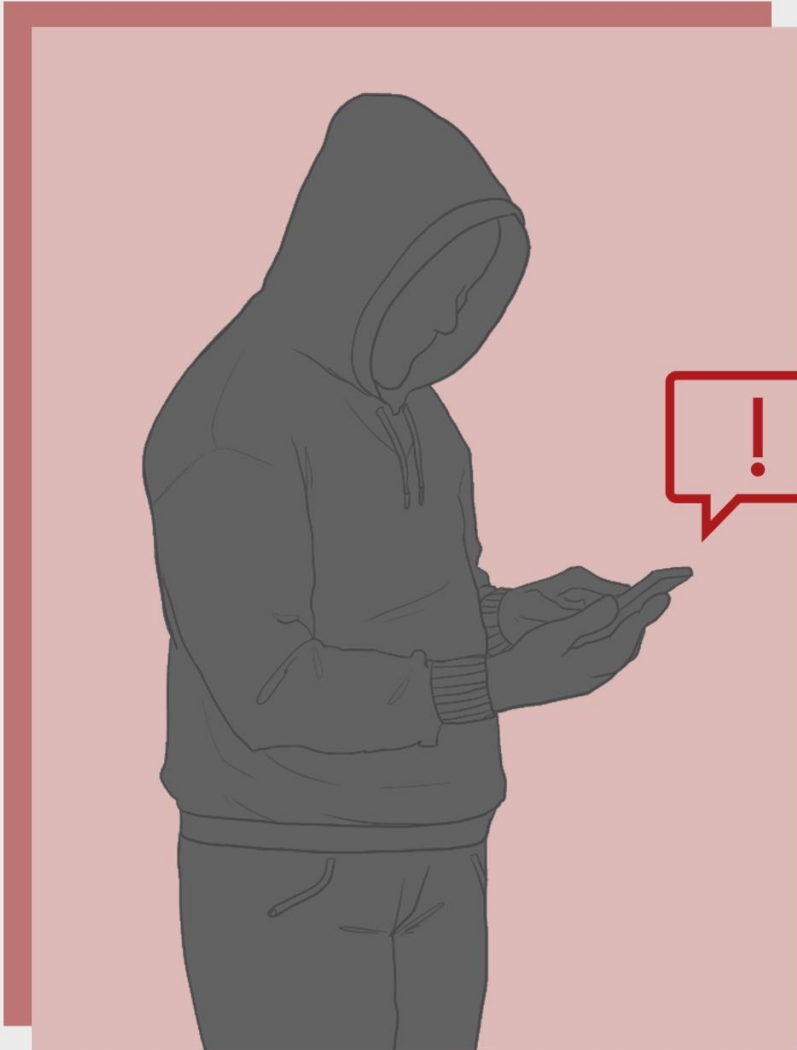
## How do solicitations occur?

- Most occur on social networking sites
- Most occur among older teens
- Most teens are solicited by peers
- Most are not bothered by it

# Offenders groom children by:

- Exploiting their natural curiosity
- Gradually introducing explicit images
- Using adult status to control a child's behavior
- Offering gifts like cell phones and gift cards





# Grooming

Someone trying to groom children might:

- Flatter them
- Send them gifts
- Discuss inappropriate adult subjects, such as dating or sex
- Ask them to keep secrets
- Turn them against their family and friends
- Share or ask for revealing images
- Blackmail them
- Make them feel guilty or ashamed
- Ask to meet face-to-face





**Receiving gifts**



**Calling unknown  
numbers**



**Minimizing  
the screen**

# **Signs of Grooming**

Check if your child is...



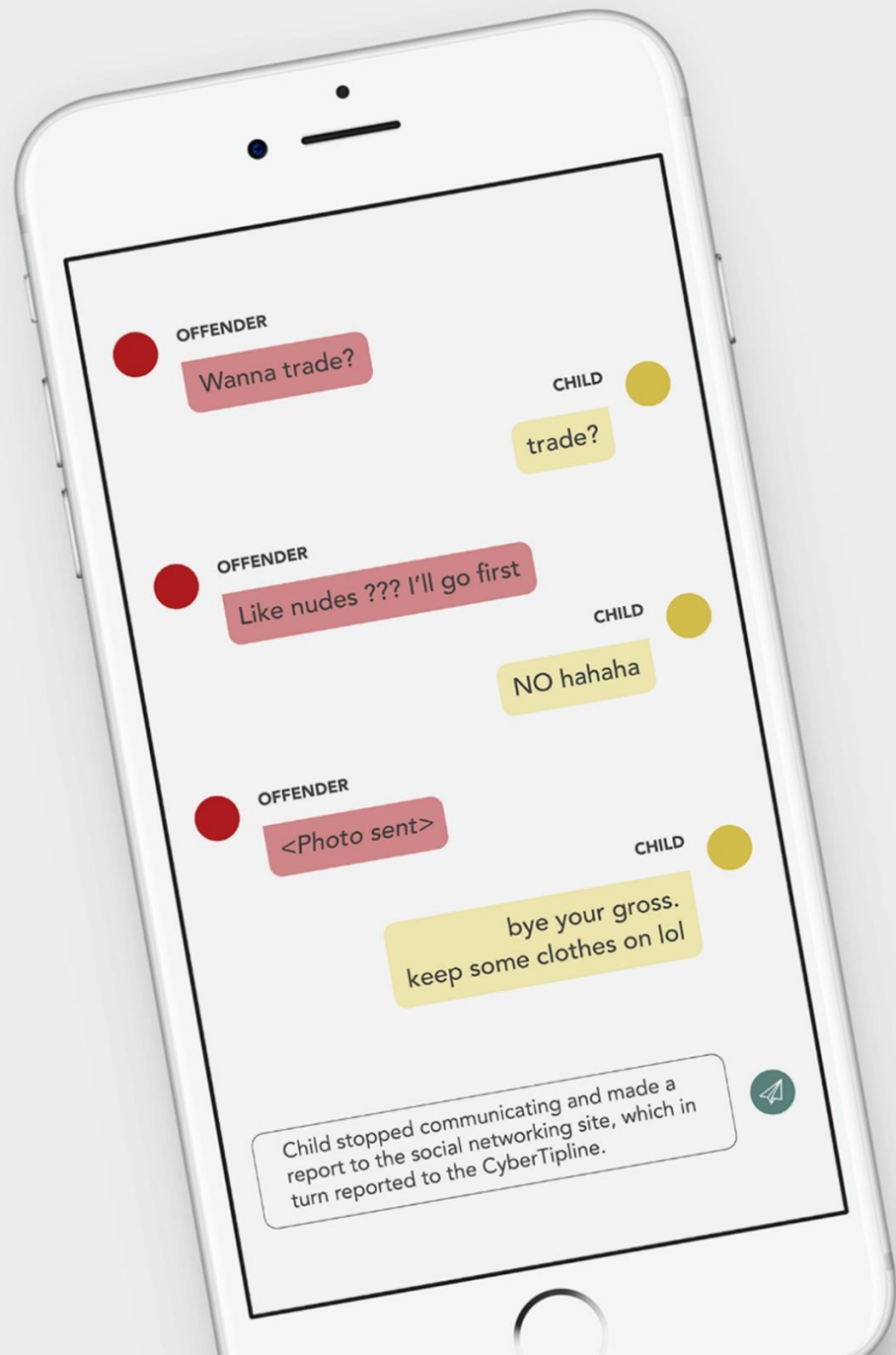
**Rejecting family  
and friends**



**Getting upset  
when not online**

# What you can do

- Talk to your child about relationships
- Set a policy about meeting offline for older teens
- Know your child's online friends
- Teach your child the warning signs
- Call the police
- Report to [CyberTipline.org](https://www.cybertipline.org)



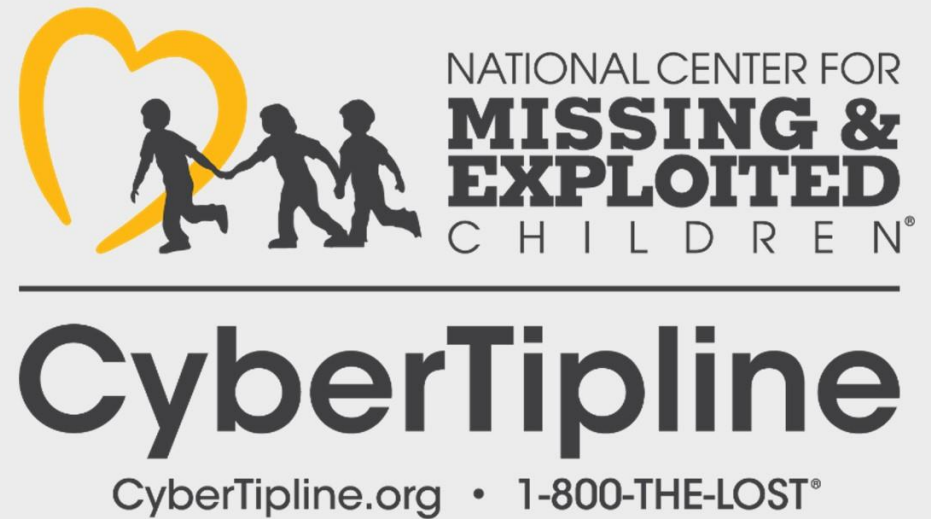
# Kids are capable

Chat log as reported to  
NCMEC's CyberTipline.



# Report to the CyberTipline

- Anyone who sends your child photos or videos containing obscene content
- Anyone who asks your child to send sexual images
- Anyone speaking to your child in a sexual manner
- Anyone who asks your child to meet in person





# Sexting

Sending or posting nude or partially nude images.

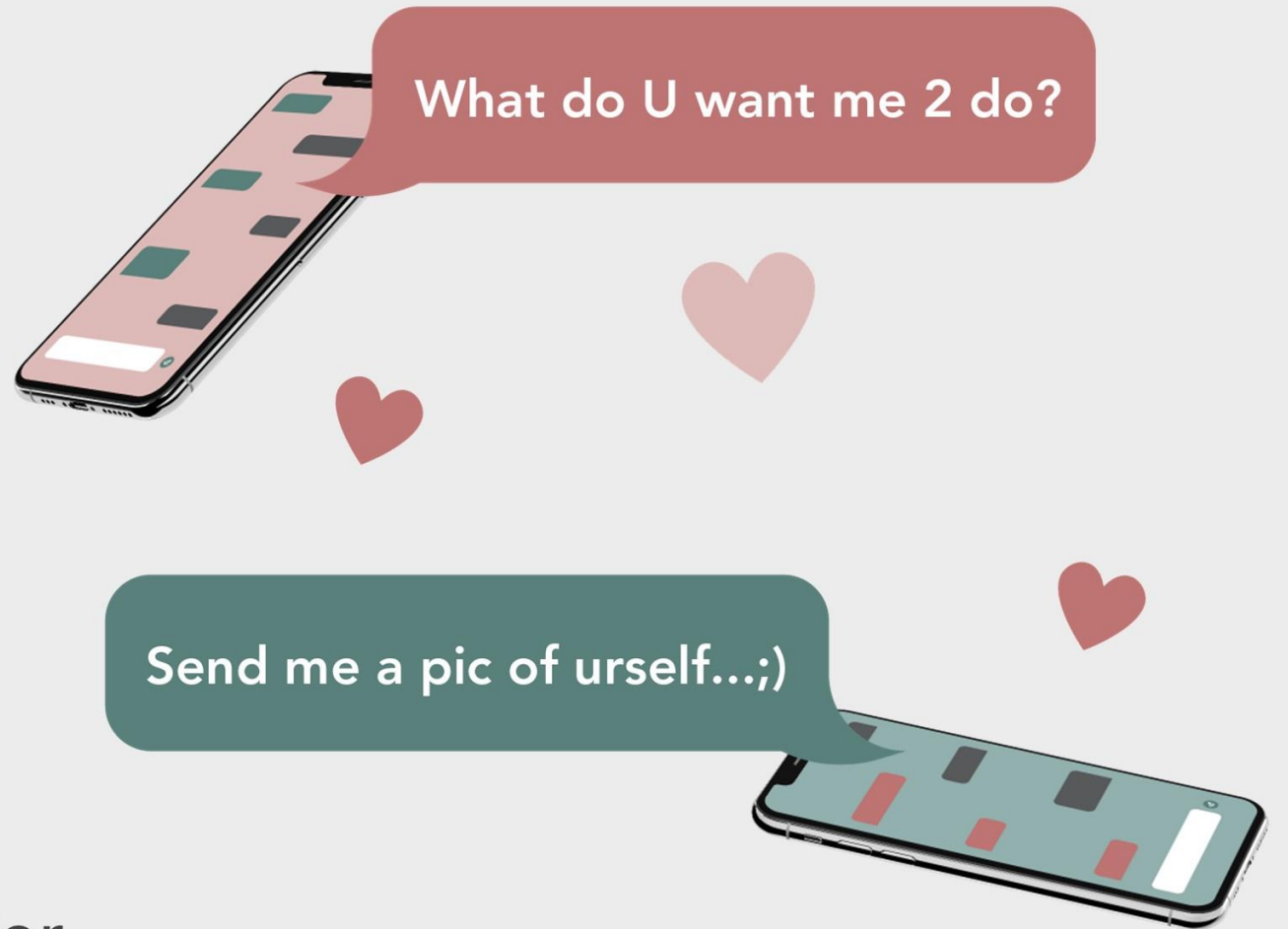
Research suggests that:

- **19.3%** of teens have sexted
- **34.8%** of teens say they have received a sext



# Why are they sexting?

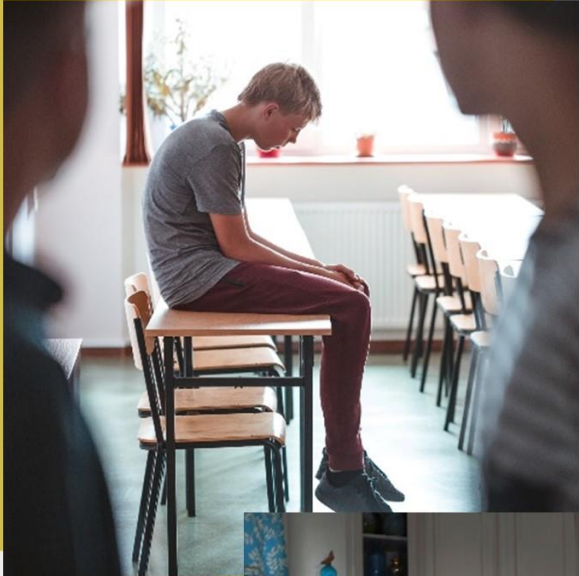
- To be funny
- To impress a crush
- Peer pressure or threats
- Experimenting with relationships, sexual behavior, and boundaries





# Consequences of Sexting

- Humiliation
- Bullying
- Blackmail
- School discipline
- Police involvement



# Addressing Sexting

- Start these conversations early
- Give real-life examples
- Discuss healthy sexual relationships
- Talk about ways an image can spread online
- Talk about resharing
- Report to [CyberTipline.org](https://www.cyberTipline.org)



# Sextortion

**Sextortion** is a form of child sexual exploitation where children are threatened or blackmailed, most often with the possibility of sharing with the public nude or sexual images of them, by a person who demands additional sexual content, sexual activity, or money from the child. This crime may happen when a child has shared an image with someone.







# What can you do

- Do not comply with the demands
- Report it to the app
- Do not delete account
- Visit:  
[MissingKids.org/gethelpnow/isyoudisplayexplicitcontentoutthere](https://MissingKids.org/gethelpnow/isyoudisplayexplicitcontentoutthere)
- Report to [CyberTipline.org](https://CyberTipline.org)



**Bullying +  
Technology =  
Cyberbullying**







# Examples of Cyberbullying

- Sending mean texts
- Posting or resharing embarrassing or inappropriate pictures
- Photoshopping pictures
- Sending threatening or harassing comments
- Creating fake profiles
- Posting fight videos
- Harassing or stalking
- Spreading rumors and gossip

# Differences between cyberbullying and bullying



**Follows  
children home**



**Spreads  
faster**



**Wider  
audience**

  
**Depression**

  
**Inability to  
Think Clearly**

  
**Anxiety**

## **Cyberbullying may cause...**

  
**Low  
Self-Esteem**

  
**Loneliness**

  
**Substance  
Abuse**

  
**Social Isolation**

  
**Running Away**



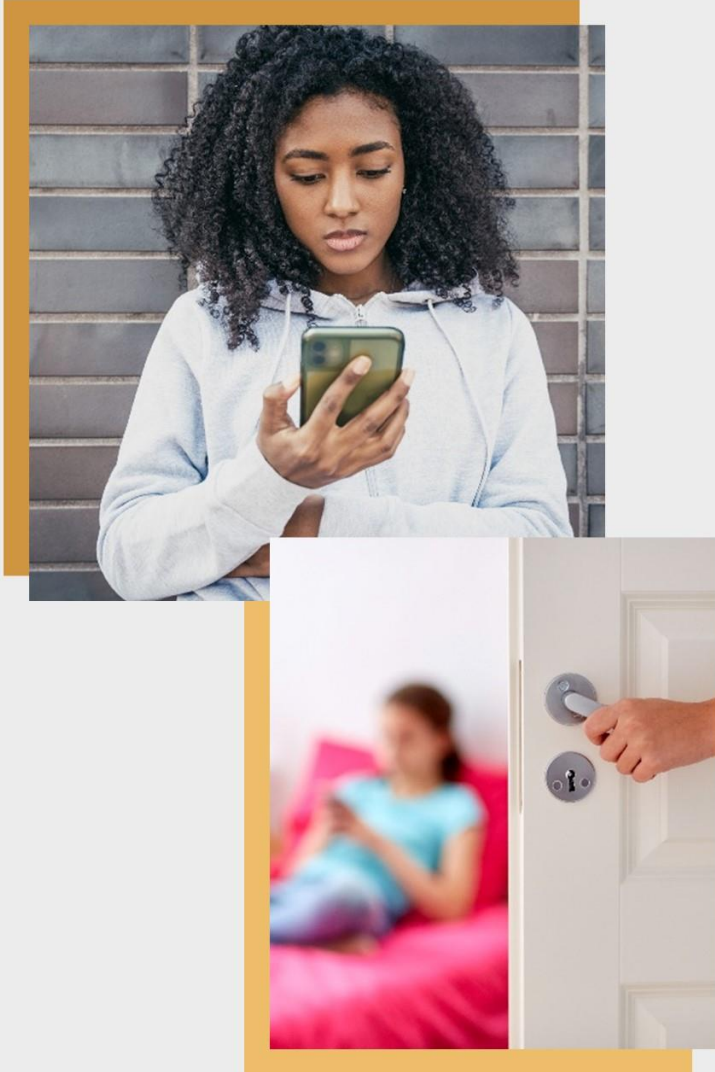
# A cyberbullying victim might

- Stop using the computer or cell phone
- Act nervous when receiving an email, IM or text
- Seem uneasy about going to school
- Withdraw from friends and family



# What you can do

- Support your child and problem solve together
- Consider saving the evidence
- Block cyberbullies
- Set up new accounts
- Talk to the school
- Report to [CyberTipline.org](https://www.cyberTipline.org)



# Cyberbullying Behaviors

- Quickly switches screens or closes program
- Uses the computer at all hours
- Gets unusually upset if they cannot use the computer
- Avoids discussions about what they are doing
- Uses multiple online accounts



# How to prevent it

Monitor and intervene in your child's online behavior in the same way you would "offline" behavior.

- Establish expectations for online and offline behavior
- Set consequences for cyberbullying
- Model good online and offline behavior

# Talk to your child about being an upstander

- Establish expectations for reporting
- Encourage them to stand up for the victim
- Help them report the cyberbullying to an adult or teacher
- Talk to your child about not forwarding mean or inappropriate content about another person



# Tech Options

- Install filtering and monitoring software
- Consult your cell phone provider
- Research options for other mobile devices
- Look at individual apps
- Explore built-in security features





# Remember what you can do



**Connect**



**Learn**



**Engage**

# NetSmartzKids.org



**Activities**



**E-books**



**Games**



**Videos**

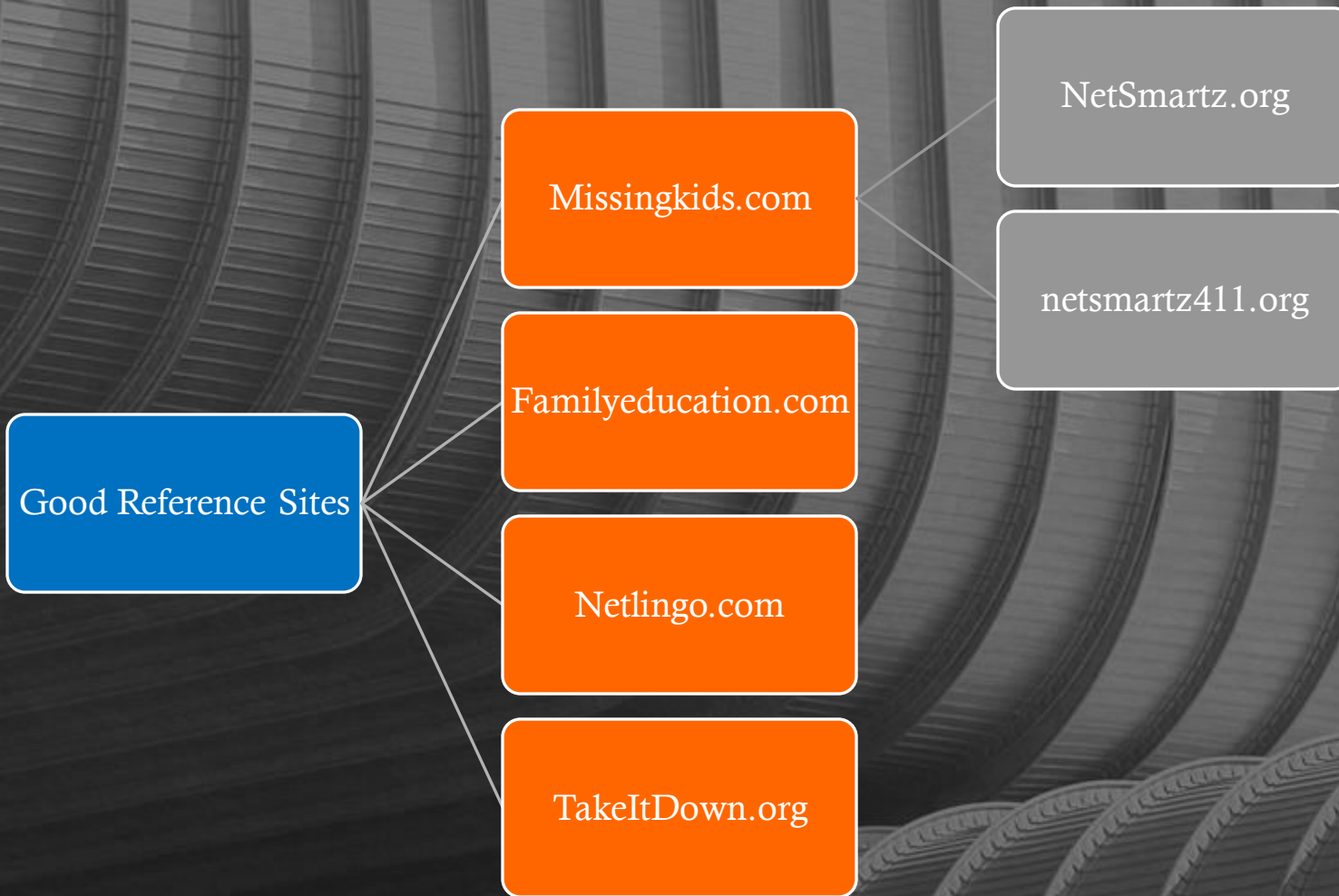
# NCMEC's Family Advocacy Division

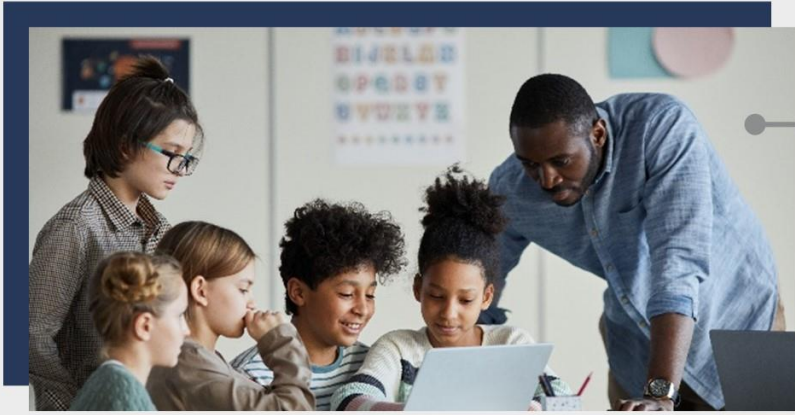
- Crisis Intervention
- Peer support network
- Mental health & community support referrals
- Reunification assistance
- Long-term emotional support
- Prevention strategies
- Legal referrals



**All services are free.** Families do not have to have an active case to be eligible.







# THANK YOU!



# *Olmsted County Victim Services*



OLMSTED COUNTY  
MINNESOTA

---

**Andrea White**  
**Southeastern MN Regional Navigator**

**Sarah Palmer**  
**Violence Prevention & Volunteer Coordinator**



# The Reality of Exploitation



# Commercial Exploitation of Youth



Sexual Exploitation

Occurs when anything of value (e.g., food, shelter, rent, drugs, cell phones) is given to a person in exchange for any type of sexual activity. A third party may or may not be involved.

Sex Trafficking

Occurs when sex is exchanged for something of value and a third party (trafficker) benefits from the exchange.

# Forms of Sexual Exploitation





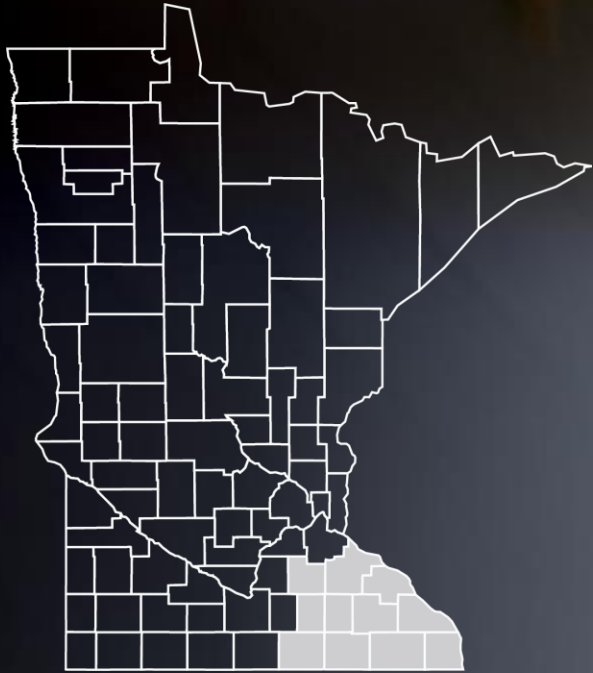
# National Center for Missing & Exploited Children

- The CyberTipline receives reports about multiple forms of online child sexual exploitation. Reports regarding CSAM, legally referred to as child pornography, make up the largest reporting category. **Over 99.5% of the reports received by the CyberTipline in 2022 regarded incidents of suspected CSAM.**



In 2022, NCMEC escalated more than  
**49,000**  
urgent reports to law enforcement that  
involved a child in imminent danger.

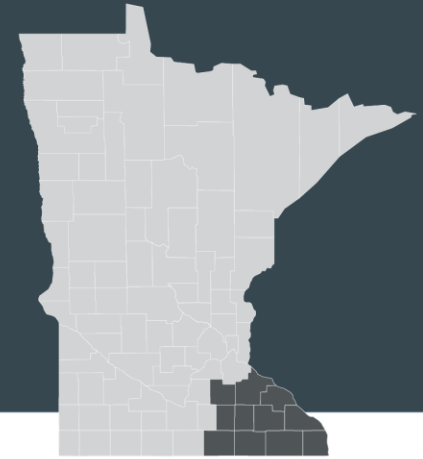
In 2022, NCMEC's CyberTipline received more than **32 million** reports of suspected child sexual exploitation.



Data from the 2022 Minnesota  
Student Survey on Trading Sex and Exploitation  
among High School Students in the  
**Southeast Safe Harbor Region**

# Prevalence of Trading Sex among High School Students in Southeast Minnesota

Out of 107 participating schools in Southeast MN:  
5,654 9<sup>th</sup> & 11<sup>th</sup> graders in 37 high schools filled out the 2022 survey\*



***Have you ever traded sex or sexual activity to receive money, food, drugs, alcohol, a place to stay, or anything else?***

NO  YES

**1.3%** answered "yes" in the Southeast area

\*Notes: County-level datasets do not contain race and ethnicity of students. If the number of students was less than 5 for a particular response, response options were combined or not reported to safeguard student privacy.

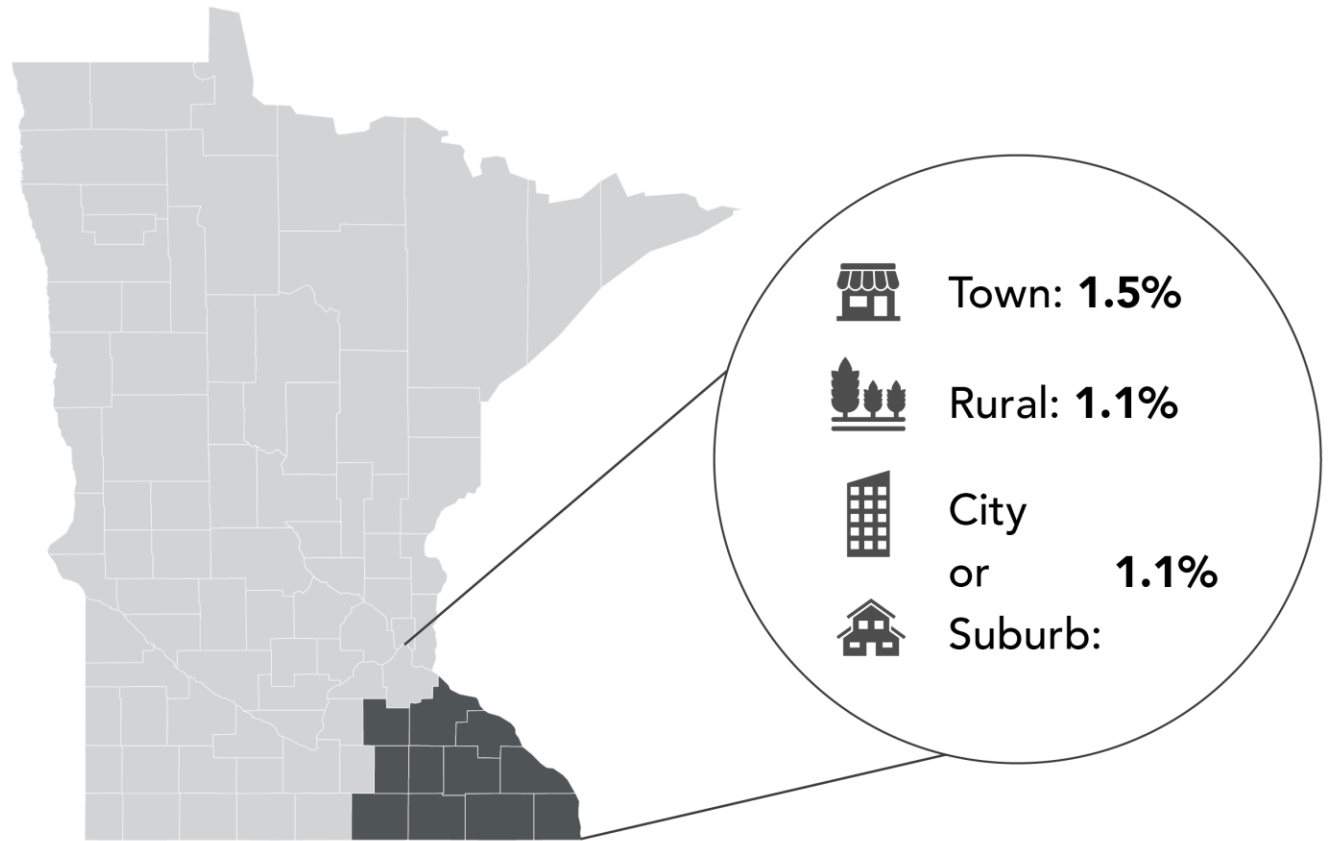


# Prevalence by Location

1.3 % of youth who live in Southeast MN said yes to trading sex.

The prevalence of sex trading is slightly higher among students attending high schools in towns (1.5%), than those in other locations.

To receive specific county level information, follow this [link](https://public.education.mn.gov/MDEAnalytics/DataTopic.jsp?TOPICID=11):  
<https://public.education.mn.gov/MDEAnalytics/DataTopic.jsp?TOPICID=11>



Notes: These are National Center for Education Statistics school locale codes for the address of the school. City is a principal city inside an urbanized area. Suburb is outside a principal city and inside an urbanized town. Town is inside an urban cluster that is separate from an urbanized area. Rural location is census-defined rural territory that is separate from an urbanized area and/or urban cluster.

**The MYST Project**



The Minnesota Youth Sex Trading Project

# Prevalence by Gender

Minnesota Student Survey data from Southeast MN indicate that cisgender boys have slightly higher rates of trading sex than cisgender girls.

Among students who identify as questioning or are unsure of their gender identity, 4.2% reported trading sex.



Cisgender boy

1.3%



Cisgender girl

1.0%



Transgender, gender diverse

2.2%



Questioning/unsure about gender identity

4.2%

Notes: "Cisgender" is a term for those whose gender identity aligns with their birth-assigned sex. "Transgender, gender diverse" describes individuals whose gender identity differs from social or cultural expectations of their birth-assigned sex.

**The MYST Project**



The Minnesota Youth Sex Trading Project

# How to Talk with a Loved One About Sexual Violence

---

**T** Thank them for telling you

---

**A** Ask how you can help

---

**L** Listen without judgement

---

**K** Keep Supporting

---







OK.  
SO YOU DID  
A THING...

# Safe Harbor

## **Training:**

Our staff are available to offer training specialized for professionals by discipline or to community groups.

## **Consultation:**

Professionals working with sexually exploited youth or trafficking victims can contact our office for advice, referrals, and other assistance.

## **Case Management:**

Our regional navigator is available to work directly with domestic minor sex trafficking victims in our 11-county area.

## **Outreach:**

Our staff and volunteers are available to help with spreading word about sex trafficking, safe harbor, and services here in Southeastern Minnesota.

## **Community Groups:**

To address sex trafficking, everyone needs to work together. Our staff are able to assist community members with organizing groups to locally raise awareness, advocate for resources, and provide education and prevention.

## **Prevention:**

Sex trafficking is preventable! Please visit our prevention page to learn more about the many effective prevention programs we offer.



# LOVE146 CAREGIVER TRAINING

- **NOT A NUMBER CURRICULUM:** is an interactive, prevention curriculum developed by Love146. It is designed to teach youth how to protect themselves from human trafficking and exploitation through information, critical thinking, and skill development. The curriculum was developed for youth ages 12-18. Not a number is applicable backgrounds.

- **CAREGIVER TRAINING:** Participants will learn about safety planning with youth and resources available to support youth. Participants will develop a basic understanding of Human Trafficking, Sexual Exploitation, and vulnerabilities.

**Contact Victim Services to learn more about these opportunities!**



# Contact Information

**Our crisis line is available 24/7**

24/7 Crisis Line: 507-289-0636

Email:

[victimservices@olmstedcounty.gov](mailto:victimservices@olmstedcounty.gov)

Main Office: 507-328-7270

**Andrea White**

Safe Harbor Regional Navigator  
[Andrea.White@olmstedcounty.gov](mailto:Andrea.White@olmstedcounty.gov)

**Sarah Palmer**

Violence Prevention & Volunteer  
Coordinator  
[sarah.palmer@olmstedcounty.gov](mailto:sarah.palmer@olmstedcounty.gov)

507-328-7072 Office mainline

**OLMSTED COUNTY  
MINNESOTA**



# OLMSTED COMMUNITY OUTREACH

Lead Community Outreach Specialist Teri Dose



**OLMSTED COUNTY  
SHERIFF**

# **FAMILY IMPACT SPEAKER**

Peggy Weivoda

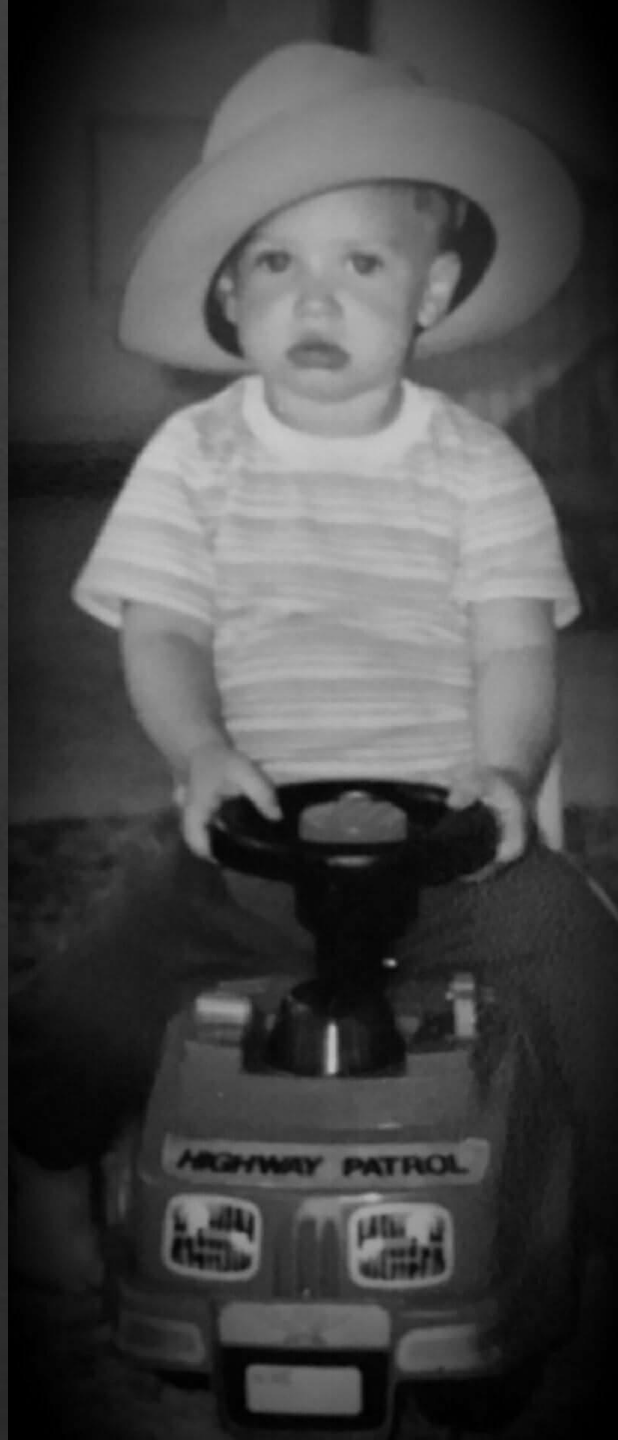




John

Andy

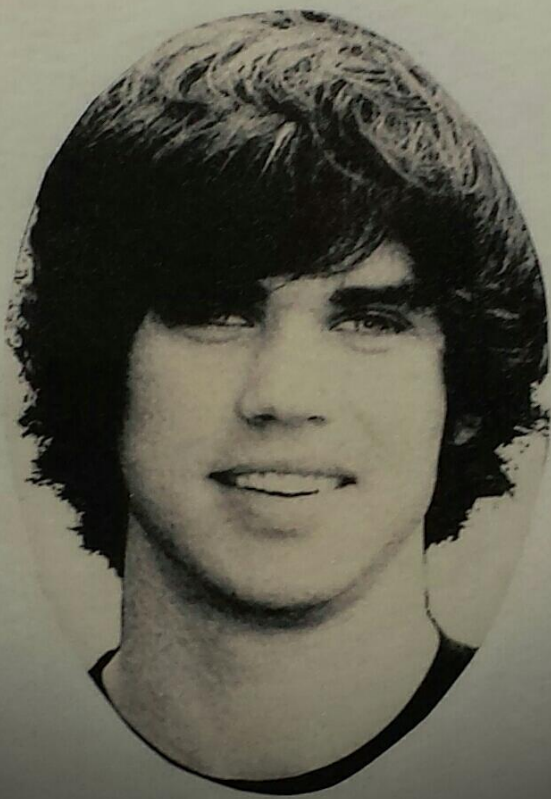






M  R E

THAN AN ADDICT









Johnathan Francis  
Weivoda  
September 5, 1989  
July 6, 2015  
Son of Terrence & Peggy  
Brother of Andrew

WEIVODA

ARNOLD C WEIVODA  
CPO US NAVY  
WWII KOREA VIETNAM  
JAN 21 1923  
AUG 16 2002

NISSEN  
H. WILLIAM JR. AUG. 6, 1936  
MAY 10, 2018  
TERESA JANE FEB. 12, 1937  
OCT. 30, 2016  
In Loving Memory











**OLMSTED COUNTY  
SHERIFF**

# PANEL DISCUSSION

Questions and Answers